



Graduate School of Banking
at the University of Wisconsin – Madison

Graduate Schools of Banking

Enrollment History

2023 Session

CONFIDENTIAL!

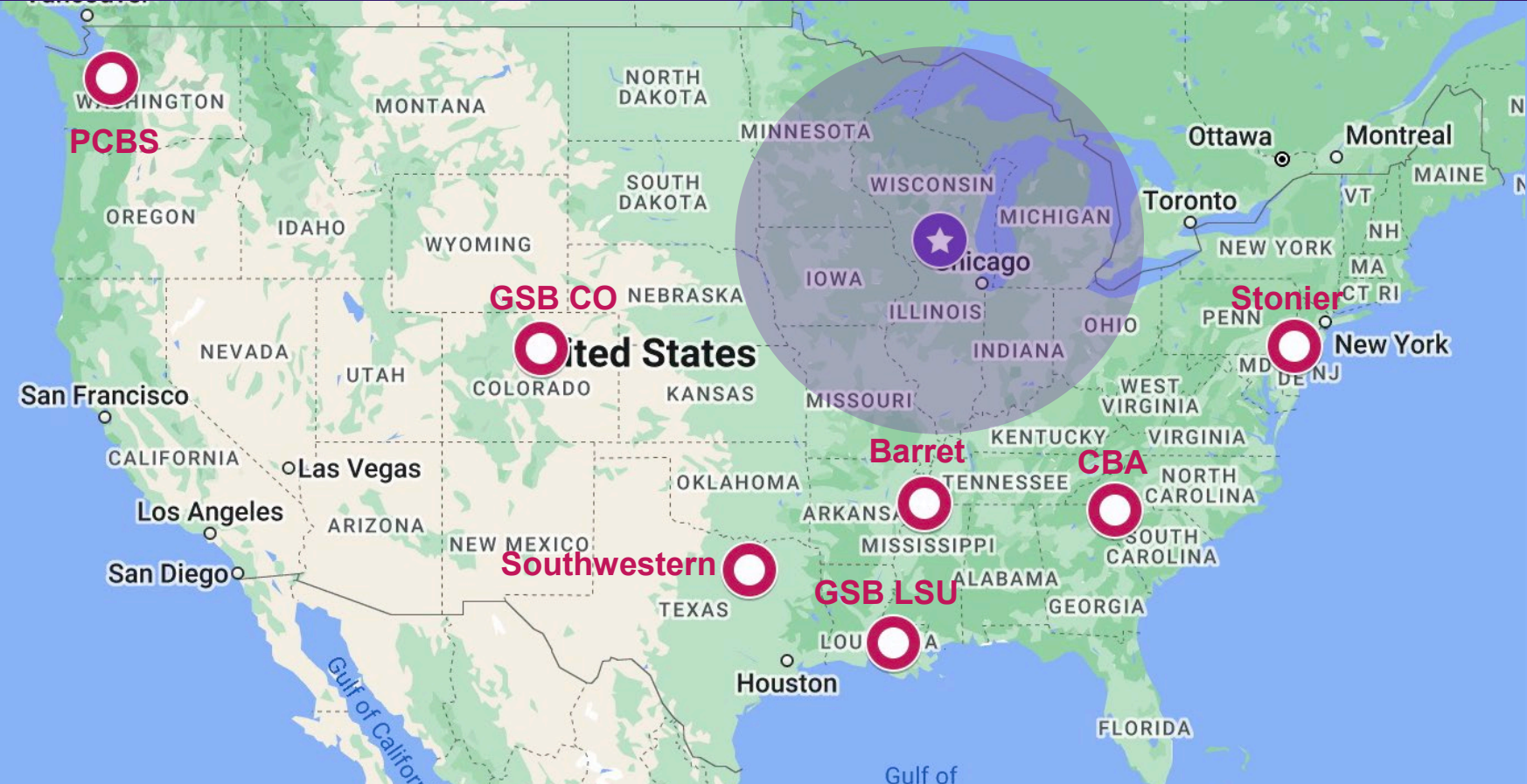
This document is intended for informational purposes only with the GSB-WI Banker Advisory Board and Curriculum Advisory Committee and is not to be shared with others – either internally or externally – without prior consent from the President & CEO of the Graduate School of Banking at the University of Wisconsin-Madison.

Prepared by
Graduate School of Banking
at the University of Wisconsin-Madison

KEY to Graduate Banking School Abbreviations

- GSB-WI** = Graduate School of Banking at Wisconsin (University of Wisconsin-Madison)
- GSB-LSU** = Graduate School of Banking at Louisiana State University (Baton Rouge, LA)
- SGSB** = Stonier National Graduate School of Banking (ABA, University of Pennsylvania, Philadelphia)
- PCBS** = Pacific Coast Banking School (University of Washington, Seattle)
- GSB-CO** = Graduate School of Banking at Colorado (University of Colorado at Boulder)
- SWGSB** = Southwestern Graduate School of Banking (Southern Methodist University, Dallas)
- CBA-EBS** = Executive Banking School (Consumer Bankers Association, Furman University, Greenville, SC)

Graduate Schools of Banking

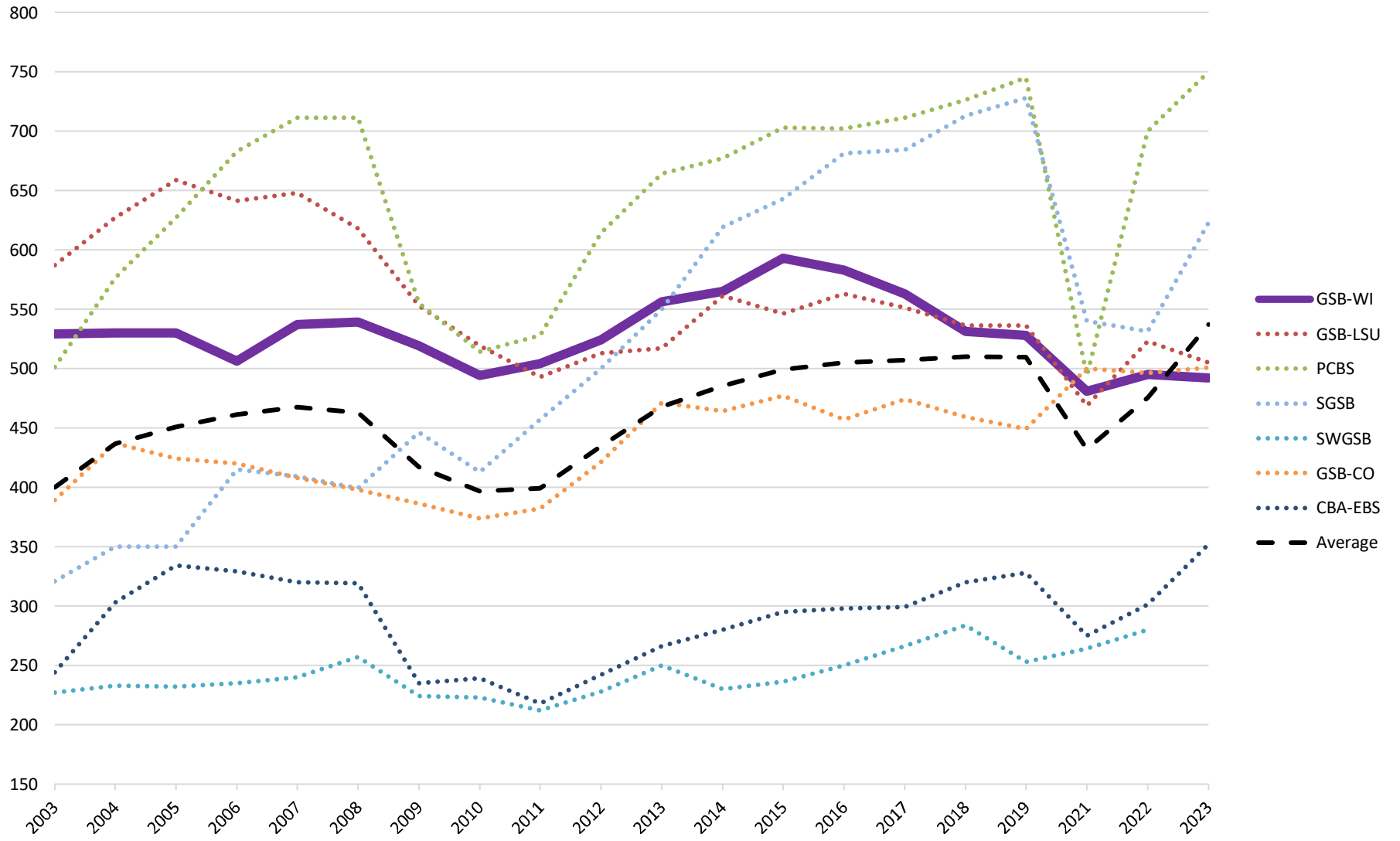


YEAR	GSB-WI	GSB-LSU	PCBS	SGSB	SWGSB	GSB-CO	CBA-EBS	Average
2003	529	587	501	321	227	389	244	400
2004	530	627	576	350	233	437	303	437
2005	530	659	627	350	232	424	334	451
2006	506	641	683	415	235	420	329	461
2007	537	648	711	409	240	408	320	468
2008	539	618	711	399	257	398	319	463
2009	519	553	555	446	224	386	235	417
2010	494	519	514	413	223	374	239	397
2011	504	493	528	457	212	382	218	399
2012	524	513	614	500	228	421	242	435
2013	556	517	664	550	250	471	266	468
2014	565	561	677	619	230	464	280	485
2015	593	546	703	643	236	477	295	499
2016	583	563	702	681	250	457	298	505
2017	563	551	711	684	266	474	299	507
2018	531	536	726	713	284	459	320	510
2019	528	536	745	728	253	449	328	510
2021	481	469	494	540	264	500	275	432
2022	495	523	700	531	280	496	301	475
2023	492	505	750	623		501	352	537

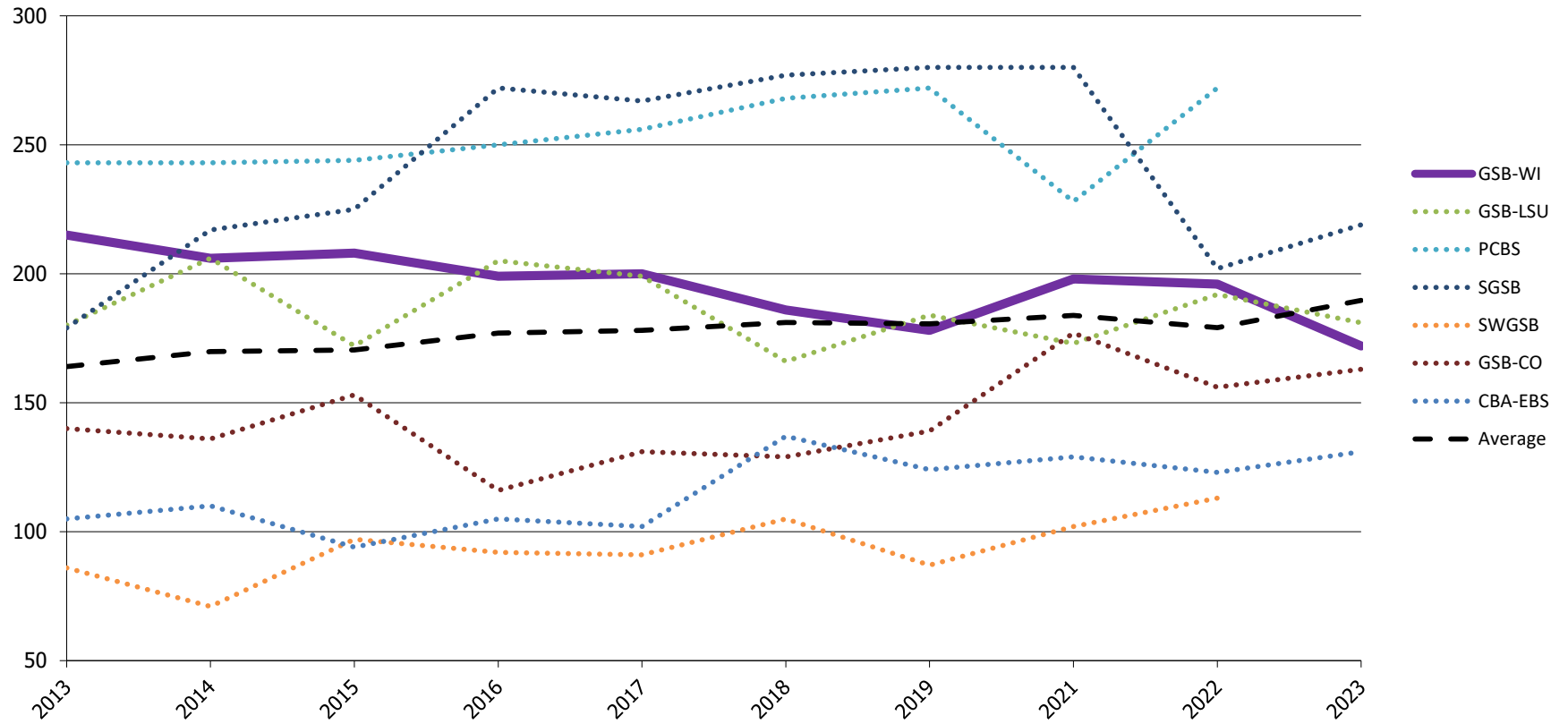
LEGEND:

- GSB-WI** = Graduate School of Banking at the University of WI-Madison
- GSB-LSU** = Graduate School of Banking at LSU
- PCBS** = Pacific Coast Banking School
- SGSB** = Stonier Graduate School of Banking
- SWGSB** = Southwestern Graduate School of Banking
- GSB-CO** = Graduate School of Banking at CO
- CBA-EBS** = Executive Banking School (Consumer Bankers Association)

Total Enrollments 2003-2023

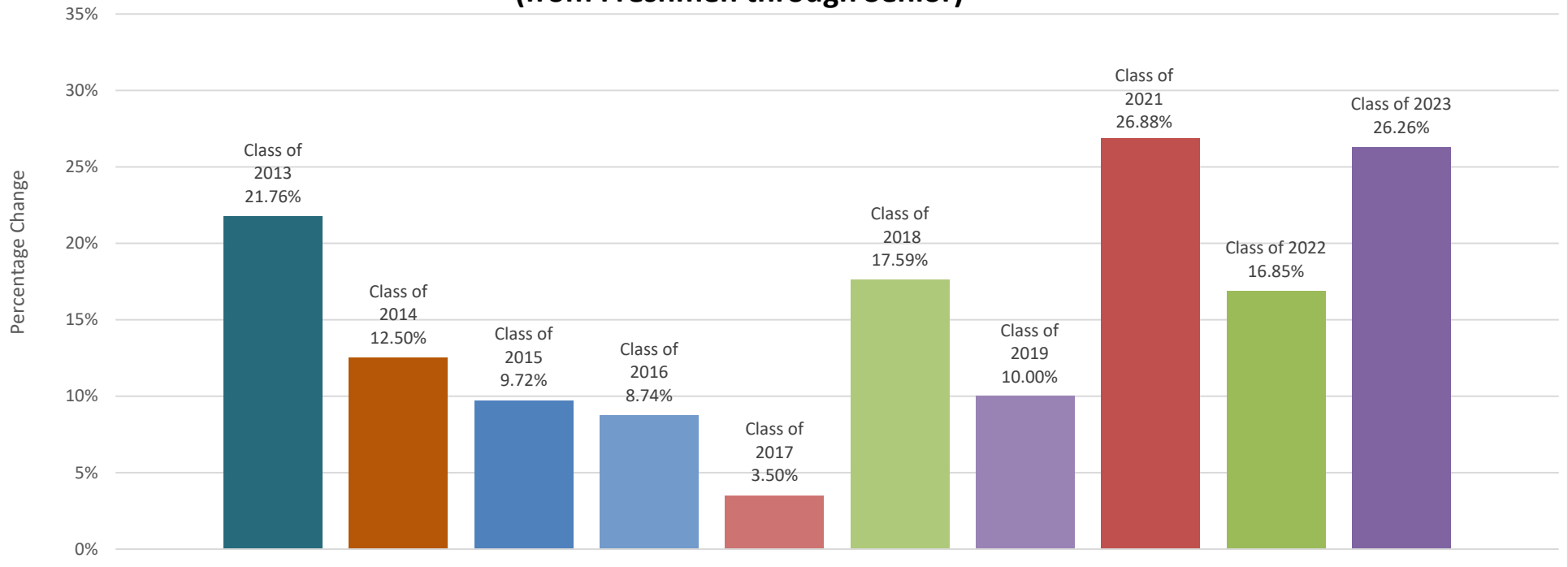


Freshman Enrollments 2013-2023



YEAR	GSB-WI	GSB-LSU	PCBS	SGSB	SWGSB	GSB-CO	CBA-EBS	Average
2013	215	180	243	179	86	140	105	164
2014	206	206	243	217	71	136	110	170
2015	208	172	244	225	97	153	94	170
2016	199	205	250	272	92	116	105	177
2017	200	199	256	267	91	131	102	178
2018	186	166	268	277	105	129	137	181
2019	178	184	272	280	87	139	124	181
2021	198	173	228	280	102	177	129	184
2022	196	192	272	202	113	156	123	179
2023	172	181	272	219	113	163	131	190

GSB Attrition -- Classes of 2013-2023 (from Freshmen through Senior)



Class of	FR	JR	SR	Attrition	Attrition	Attrition	% Change	% Change	% Change
				Year 1 to 2 FR to JR	Year 2 to 3 JR to SR	Year 1 to 3 FR to SR	Year 1 to 2 FR to JR	Year 2 to 3 JR to SR	Year 1 to 3 FR to SR
2013	216	171	169	45	2	47	20.83%	1.17%	21.76%
2014	184	170	161	14	9	23	7.61%	5.29%	12.50%
2015	216	199	195	17	4	21	7.87%	2.01%	9.72%
2016	206	190	188	16	2	18	7.77%	1.05%	8.74%
2017	200	195	193	5	2	7	2.50%	1.03%	3.50%
2018	199	170	164	29	6	35	14.57%	3.53%	17.59%
2019	200	181	180	19	1	20	9.50%	0.55%	10.00%
2021	186	170	136	16	34	50	8.60%	20.00%	26.88%
2022	178	147	148	31	-1	30	17.42%	-0.68%	16.85%
2023	198	151	146	47	5	52	23.74%	3.31%	26.26%

AVERAGE: From FR to JR (Year 1 to Year 2) -----> **12.04%**
 From JR to SR (Year 2 to Year 3) -----> **3.73%**

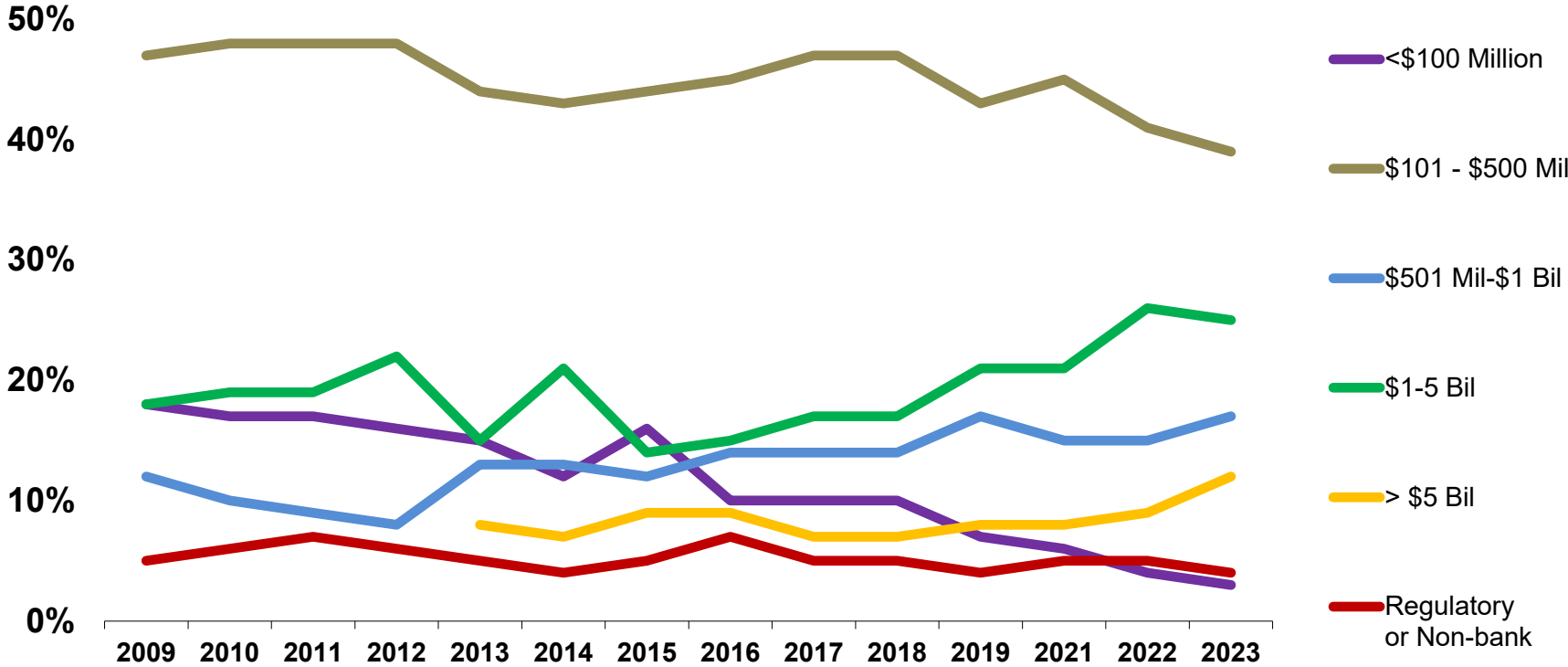


Graduate School of Banking
at the University of Wisconsin – Madison

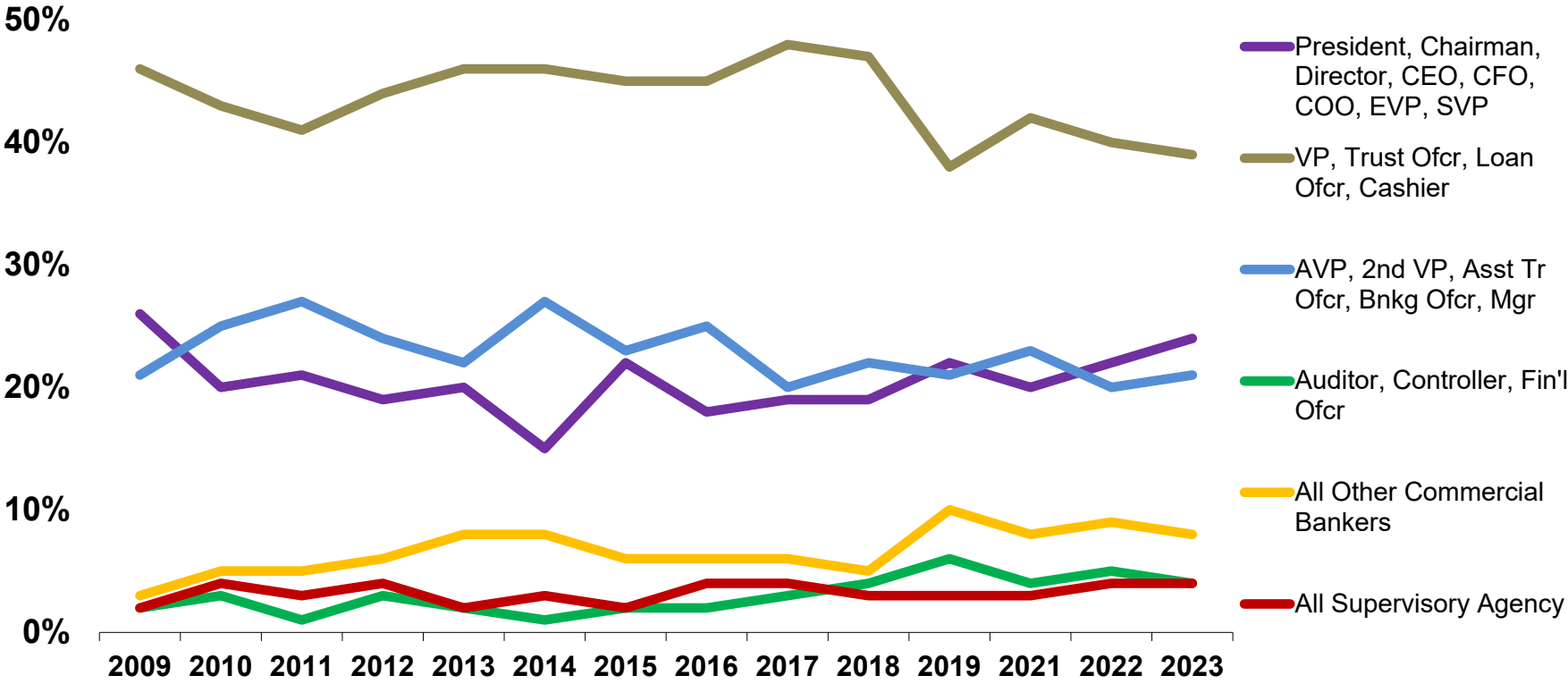
Student Demographics

All Classes

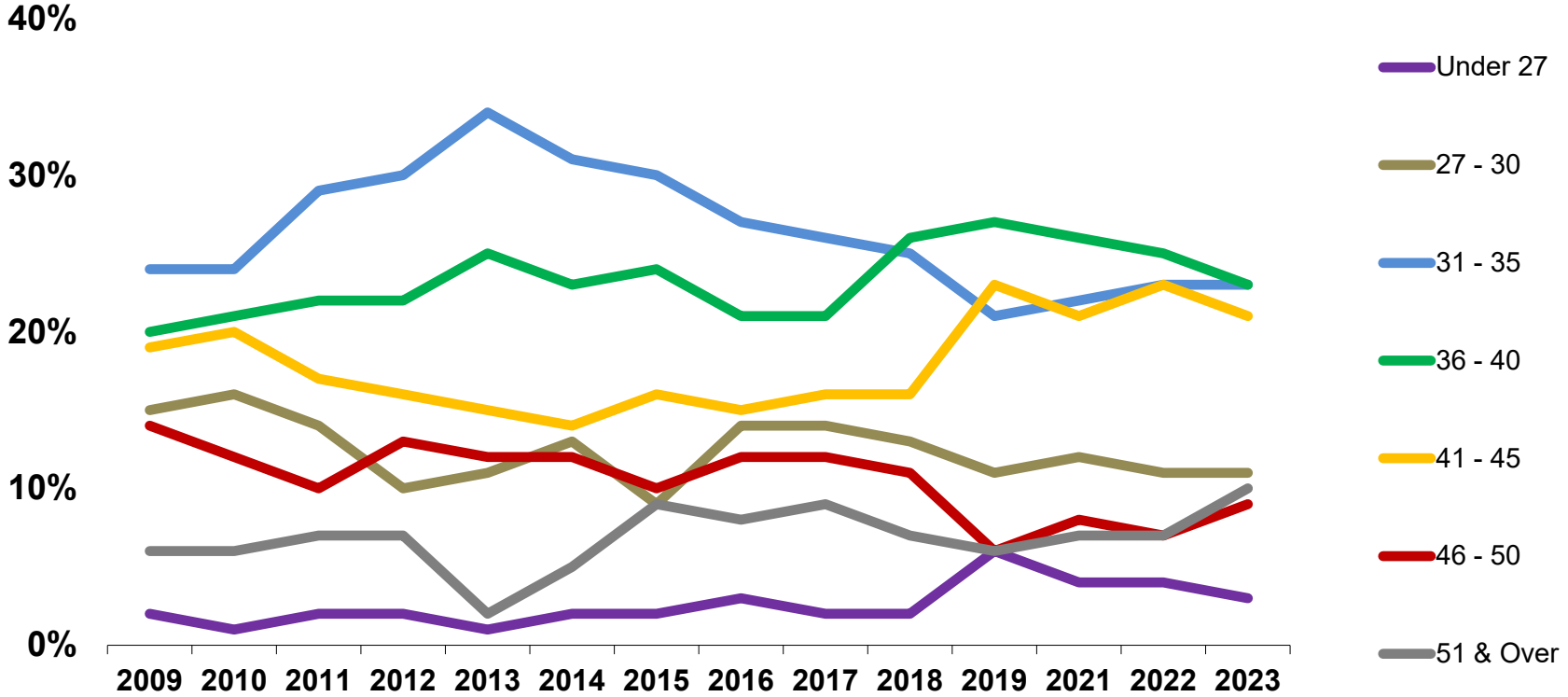
Asset Size



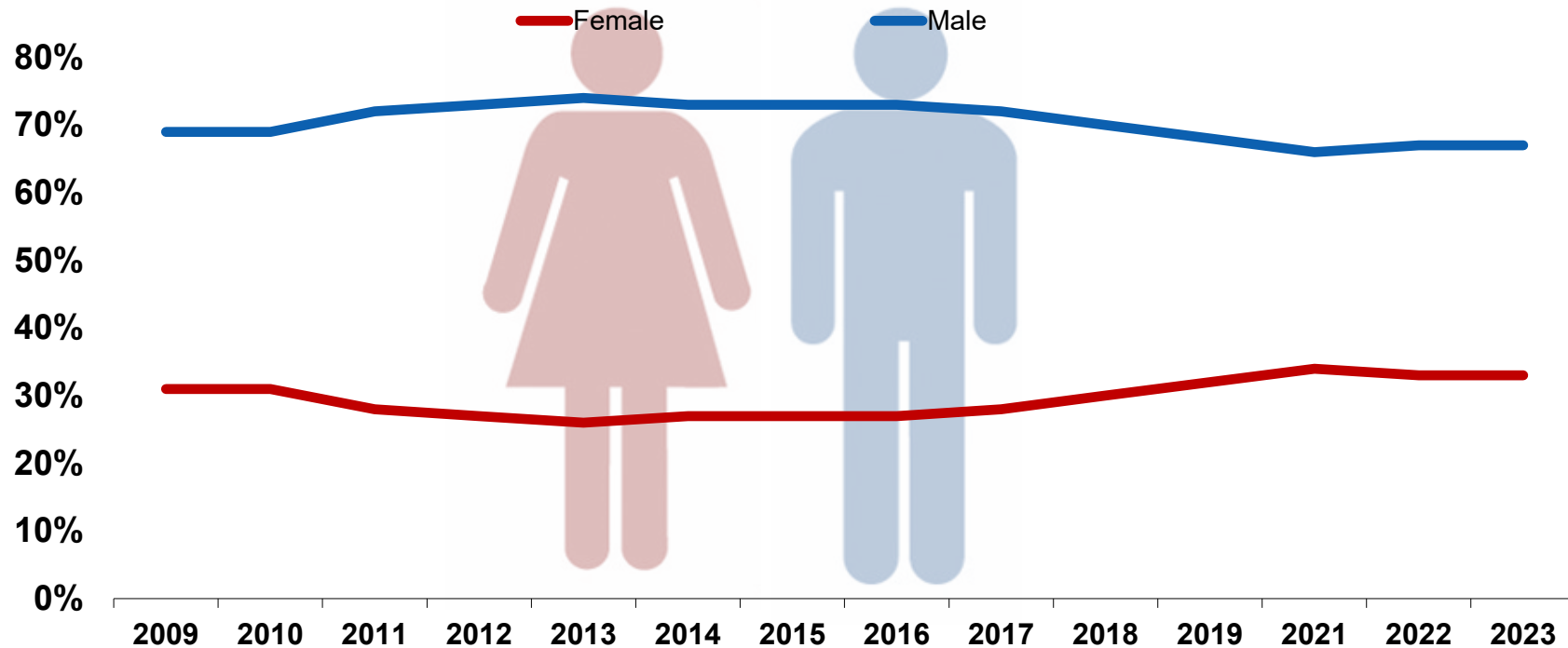
Position



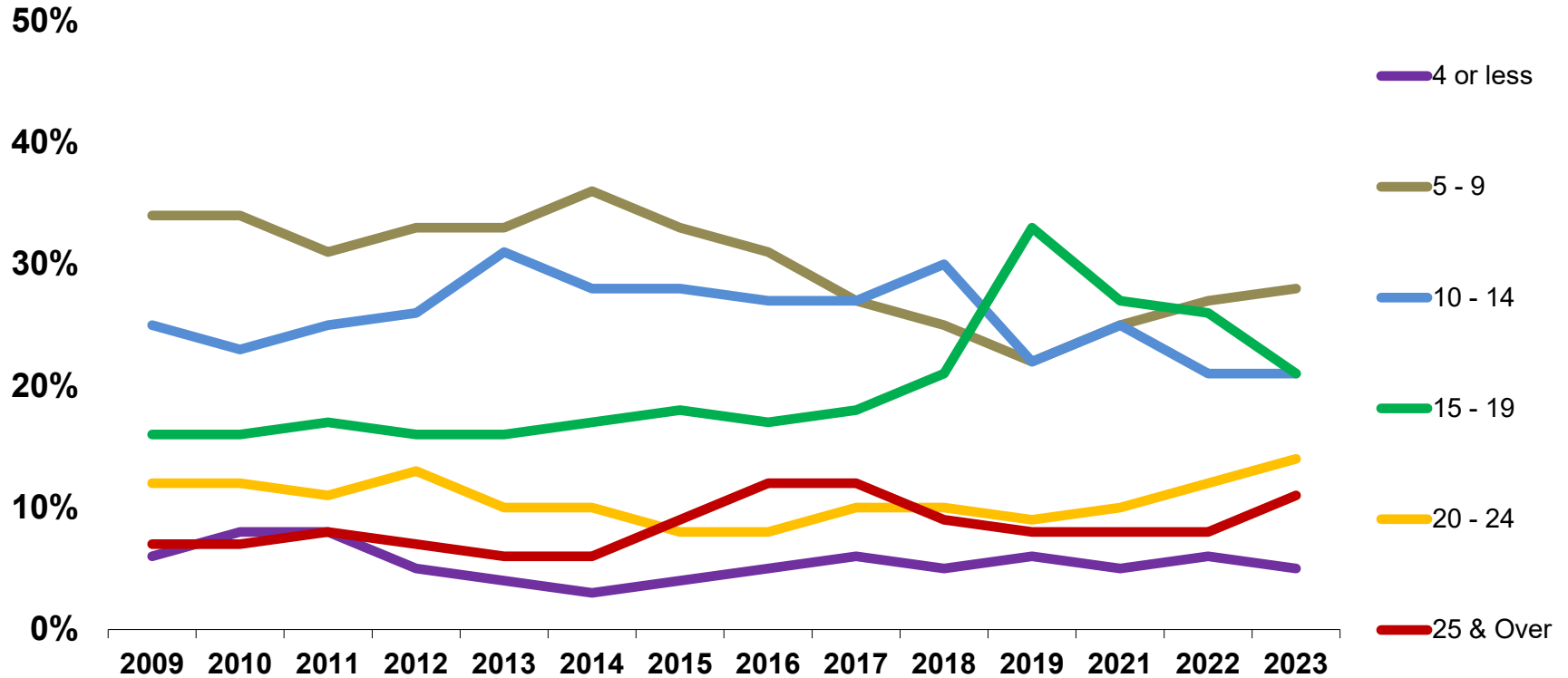
Age



Gender



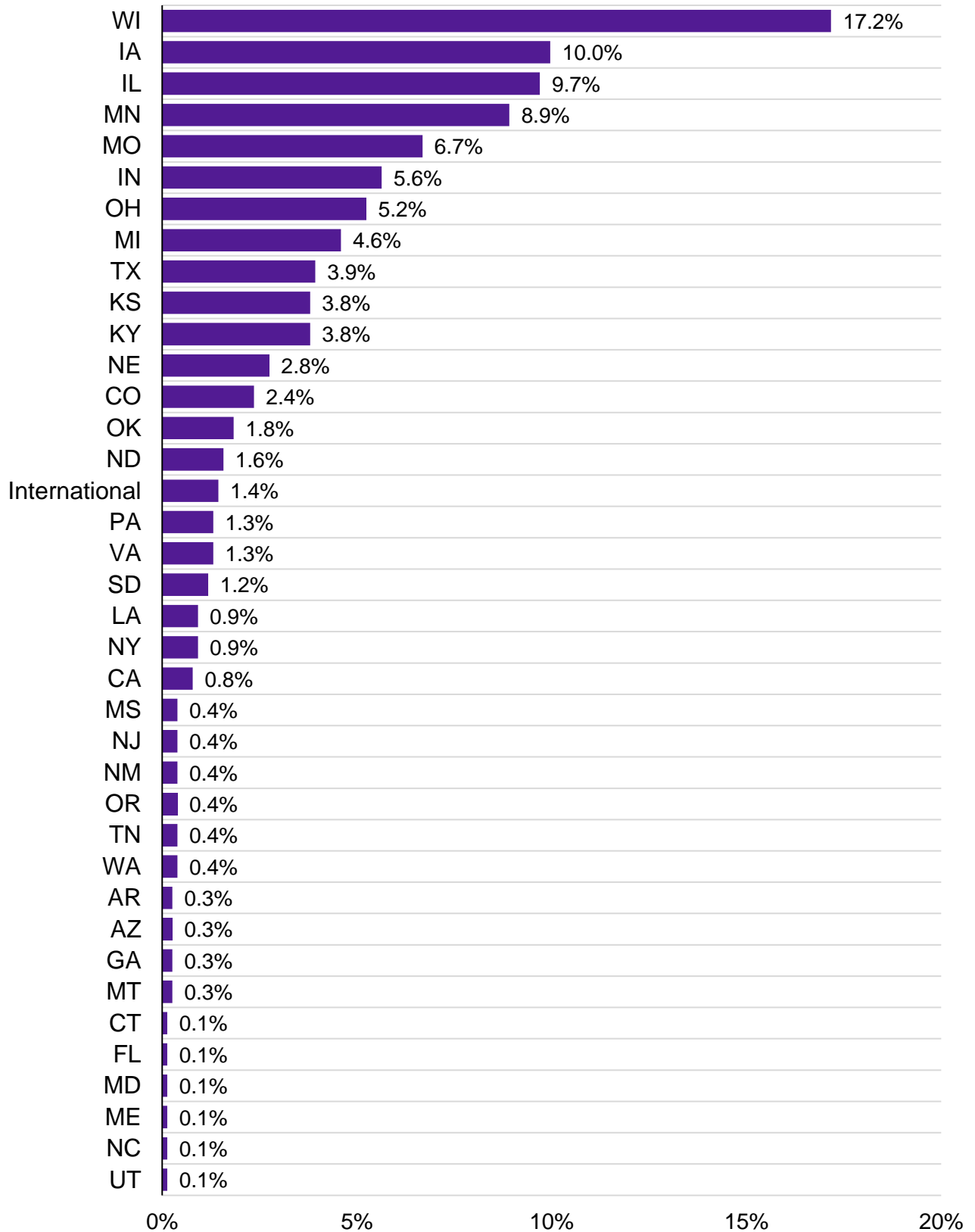
Years Of Industry Experience



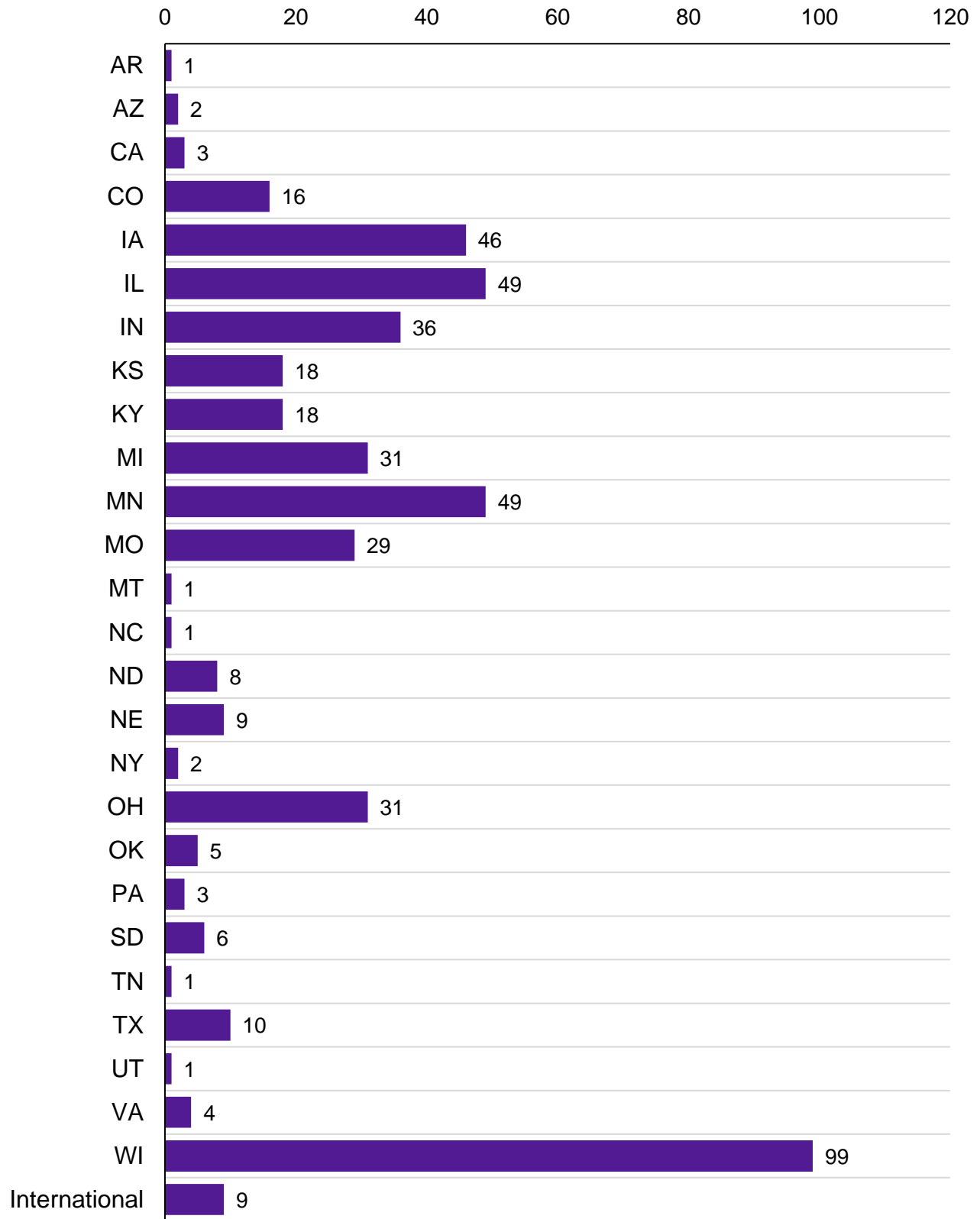
GSB 2023 Schools

State	GSB	Financial Managers	SMS	HR	Strategic HR	Digital Banking	Tech Security	Tech Mgmt	TOTAL	Percent of Total
AK									0	0.0%
AL									0	0.0%
AR	1			1					2	0.3%
AZ	2								2	0.3%
CA	3					1	1	1	6	0.8%
CO	16		1				1		18	2.4%
CT		1							1	0.1%
DC									0	0.0%
DE									0	0.0%
FL							1		1	0.1%
GA		2							2	0.3%
HI									0	0.0%
IA	46	7	1	5	3	4	4	6	76	10.0%
ID									0	0.0%
IL	49	8	9	2		3	1	2	74	9.7%
IN	36	1	2	2		1		1	43	5.6%
KS	18	1	1	3	1	2	2	1	29	3.8%
KY	18	4	1	4		1		1	29	3.8%
LA		1		1		1	2	2	7	0.9%
MA									0	0.0%
MD								1	1	0.1%
ME						1			1	0.1%
MI	31	1		1			1	1	35	4.6%
MN	49	3	1	5		3		7	68	8.9%
MO	29	2	2	7	1	2	1	7	51	6.7%
MS		3							3	0.4%
MT	1			1					2	0.3%
NC	1								1	0.1%
ND	8	1		2		1			12	1.6%
NE	9	1		1	2	5	1	2	21	2.8%
NH									0	0.0%
NJ		3							3	0.4%
NM		1					1	1	3	0.4%
NV									0	0.0%
NY	2						3	2	7	0.9%
OH	31	2	1		1	4		1	40	5.2%
OK	5	1		4			1	3	14	1.8%
OR							3		3	0.4%
PA	3	1		2		1	2	1	10	1.3%
RI									0	0.0%
SC									0	0.0%
SD	6	1		2					9	1.2%
TN	1	1				1			3	0.4%
TX	10	6		4		2	4	4	30	3.9%
UT	1								1	0.1%
VA	4			2		2		2	10	1.3%
VT									0	0.0%
WA		1						2	3	0.4%
WI	99	7	4	4	3	7	3	4	131	17.2%
WV									0	0.0%
WY									0	0.0%
International	9			1		1			11	1.4%
TOTAL	488	60	23	54	11	43	32	52	763	100.0%

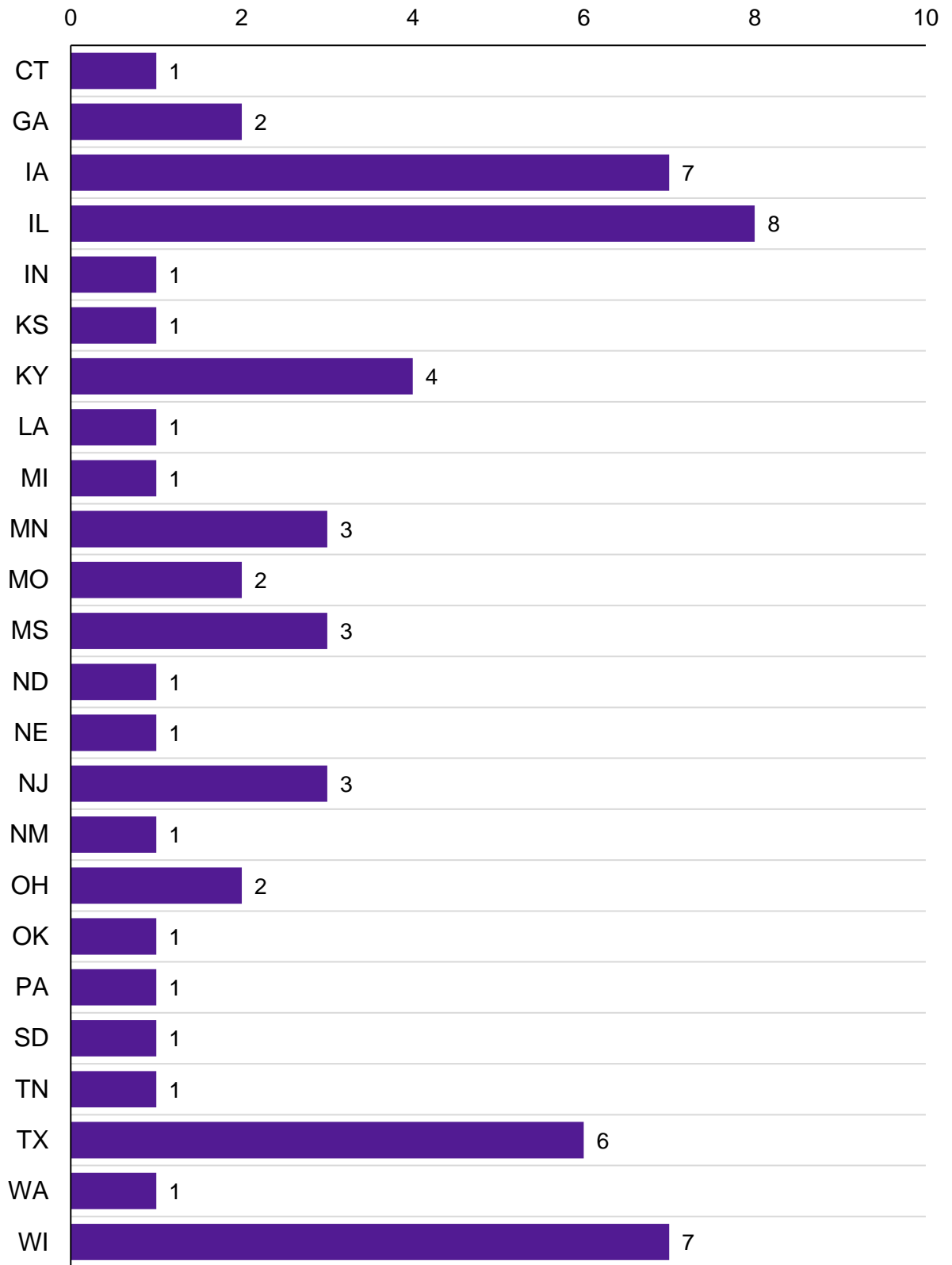
2023 GSB Schools Percent of Total Students



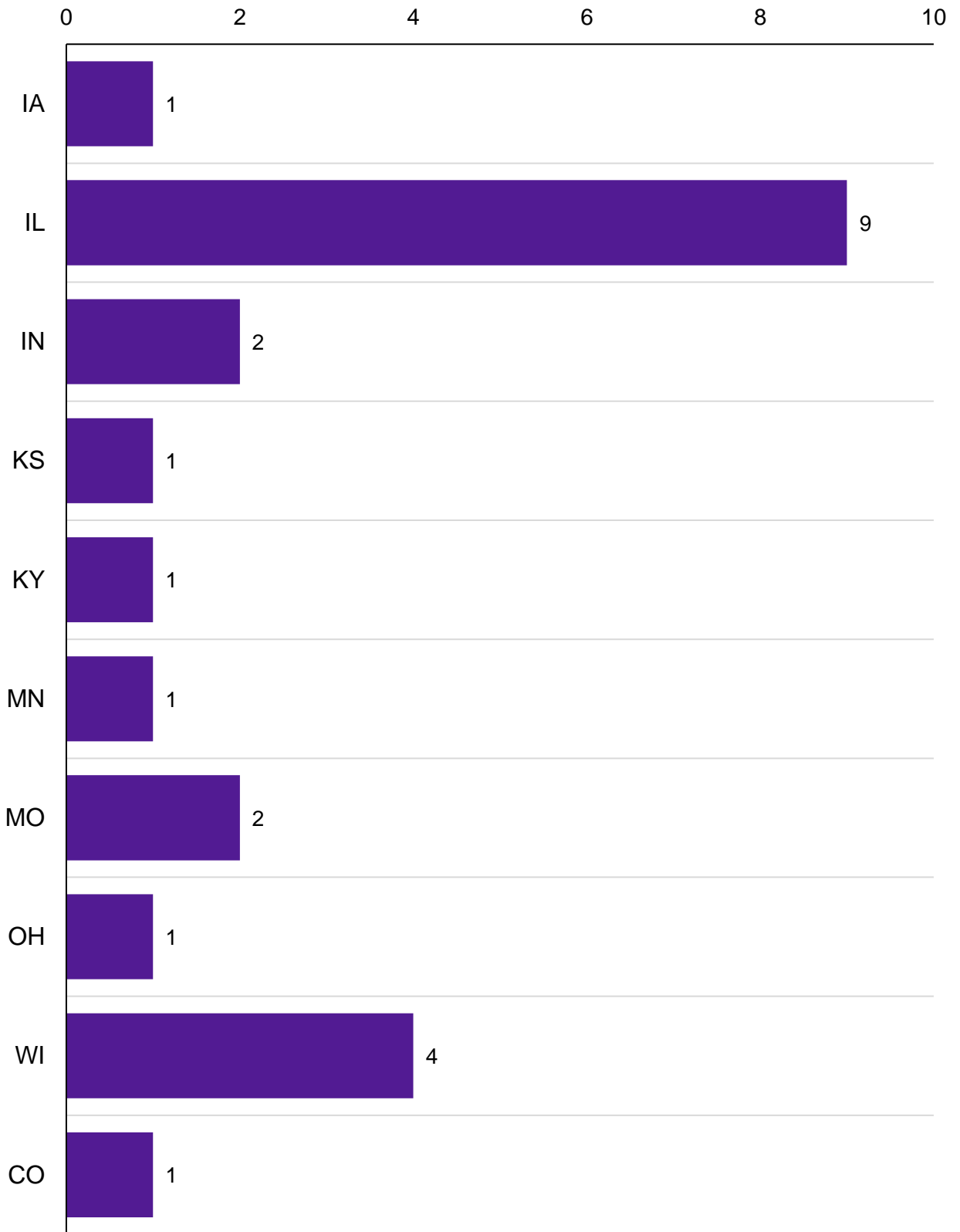
2023 GSB Program



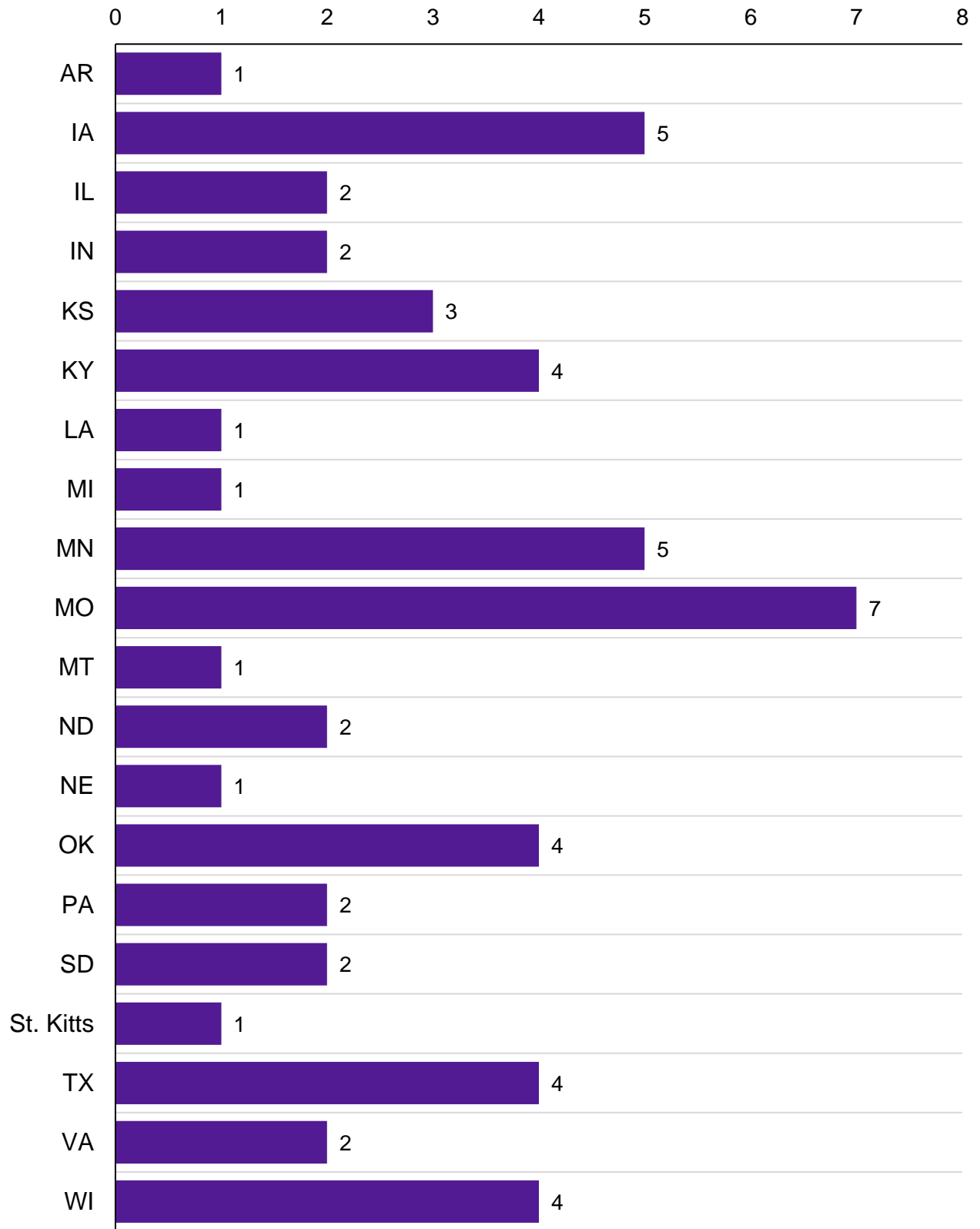
Financial Managers School



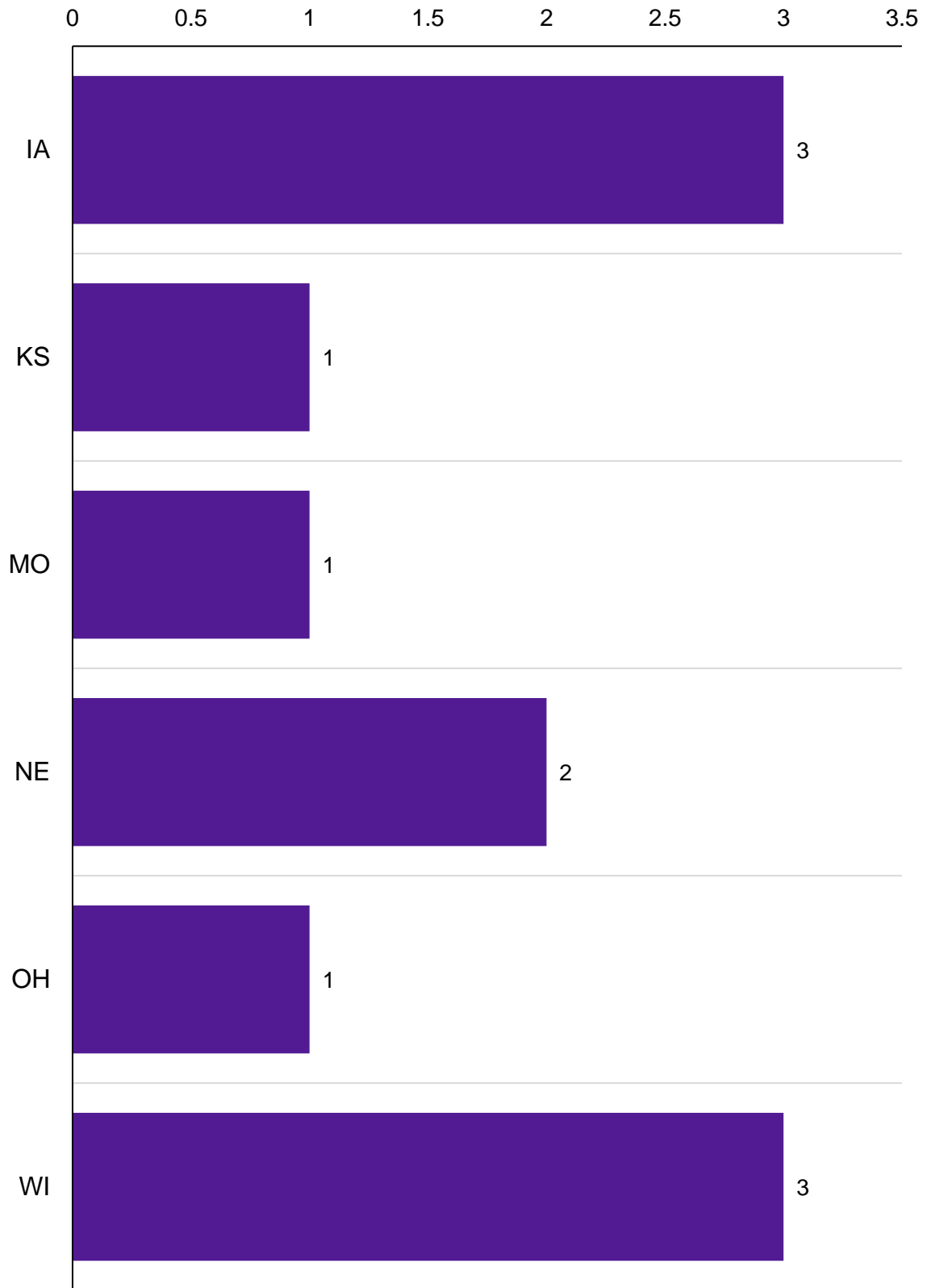
Sales and Marketing School



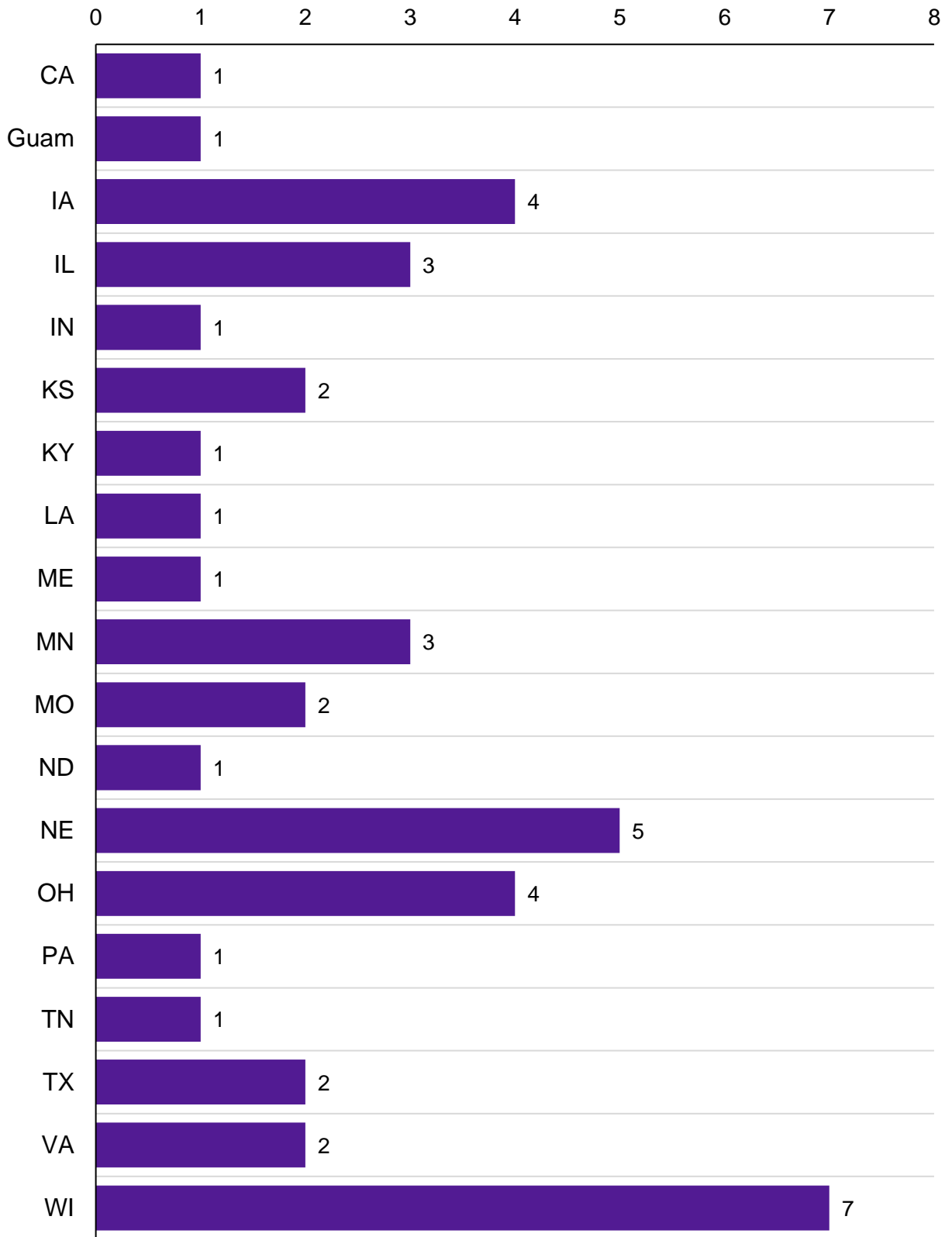
Human Resources School



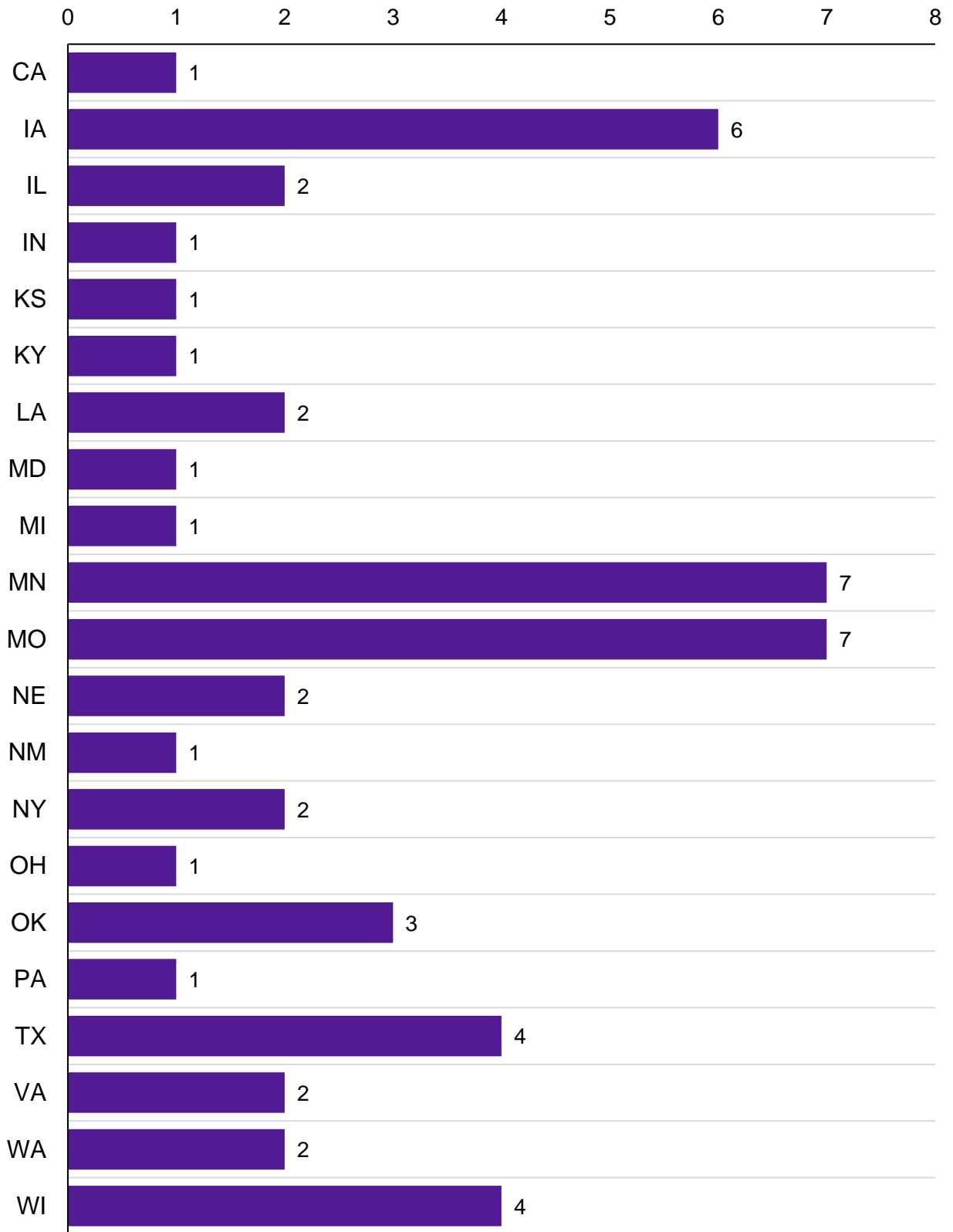
Strategic Human Resource School



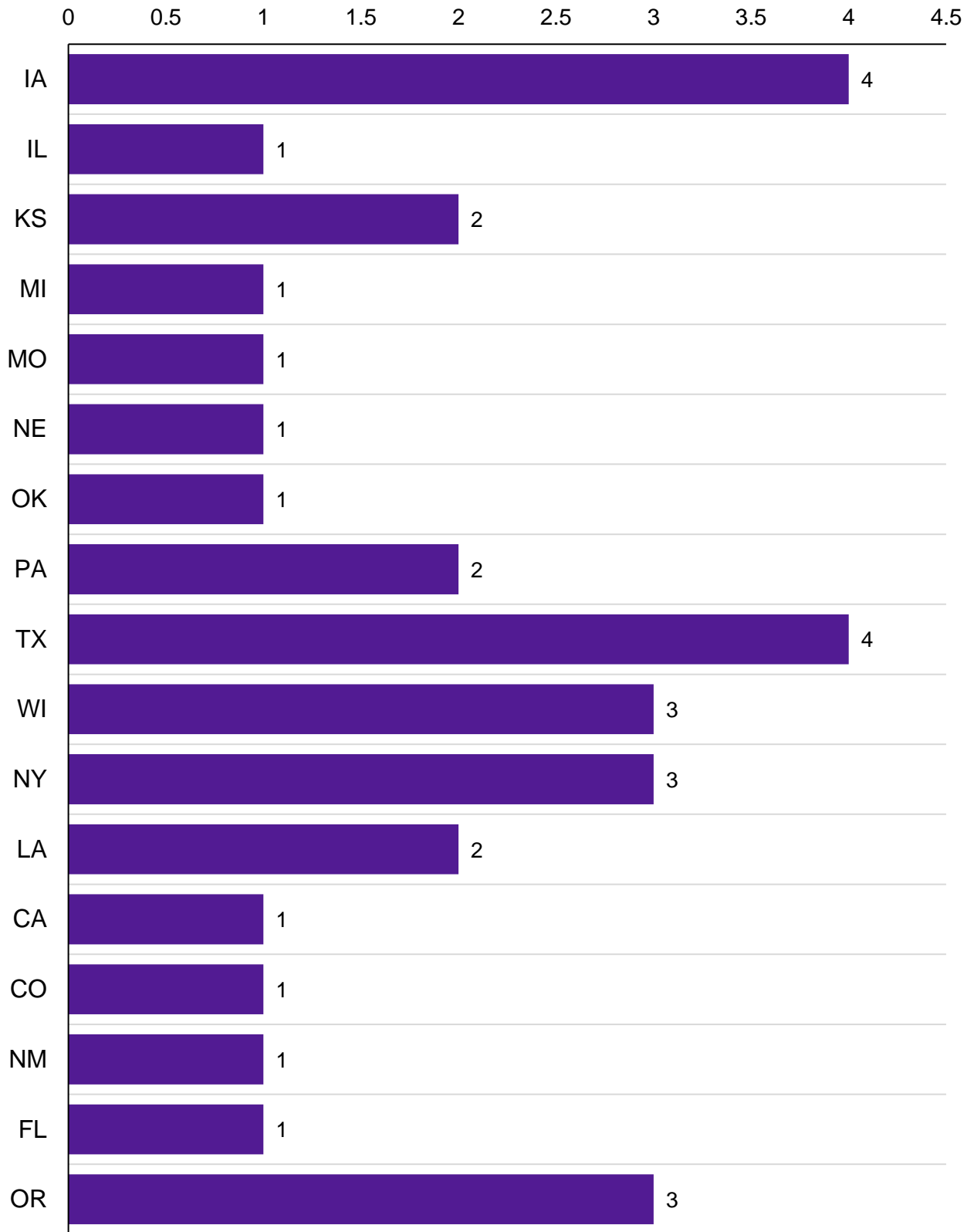
Digital Banking School



Technology Management School



Technology Security School



FDIC Insured Financial Institutions

Number of Charters By State - 2022

Purple - States Providing >1% of All GSB Students in 2023

